

# INSAT-3D Product Format Compatibility with COTS Software

# Display and Analysis Software

1. Ferret (v6.9) (Raster and Point Datasets)  
<http://www.ferret.noaa.gov/Ferret/>
2. Grads v2.0.a8+ (Supports Gridded Products: L2G and L3G) <http://www.iges.org/grads/>
3. MIAS (Meteorological Image Analysis Software)  
All Products (Indigenously Developed by SAC, ISRO)
4. IDV (Integrated Data Viewer) 4.1+ (All Products )  
[www.unidata.ucar.edu/software/idv](http://www.unidata.ucar.edu/software/idv)
5. McIDAS-V (Man Computer Interaction Data Access System) v1.3 (All Products)  
[www.ssec.wisc.edu/mcidas/software/v](http://www.ssec.wisc.edu/mcidas/software/v)

# Display and Analysis Software (Contd.)

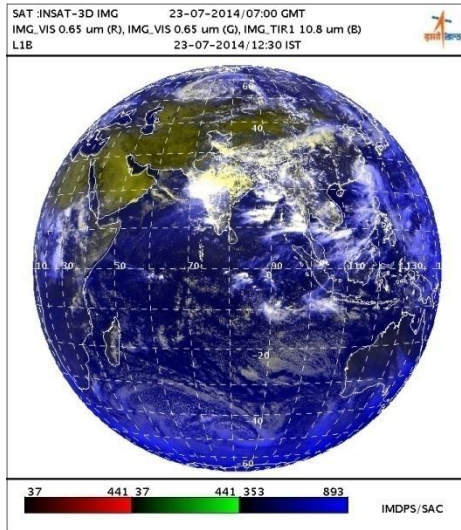
6. HDFView 2.9 (All Products)  
<http://www.hdfgroup.org/products/java/hdfview/>
7. NetCDF toolsUI.jar v4.3.22 (All Products)  
[www.unidata.ucar.edu/software/netcdf-java](http://www.unidata.ucar.edu/software/netcdf-java)
8. Panoply v2.9.4 All Raster Products  
<http://www.giss.nasa.gov/tools/panoply/>
9. Climate Data Operators (CDO) 1.6.4 rc1 (Raster Products) <https://code.zmaw.de/projects/cdo>
10. NCAR Command Language 6.0.0 (Raster Products)  
[www.ncl.ucar.edu/](http://www.ncl.ucar.edu/)

# Display and Analysis Software (Contd.)

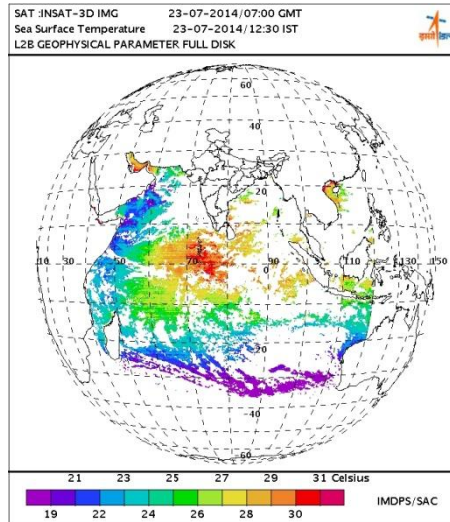
11. Quantum GIS 2.0.1 (as layer served by WMS) [www.qgis.org](http://www.qgis.org)
12. ArcGIS 10 (as layer served by WMS) [www.arcgis.com](http://www.arcgis.com)
13. THOR (Raster Products) <http://pps.gsfc.nasa.gov/THOR/release.html>
14. ncBrowse v1.6.7 (Raster Products) <ftp://ftp.epic.noaa.gov/java/ncBrowse/install.htm>

# MIAS

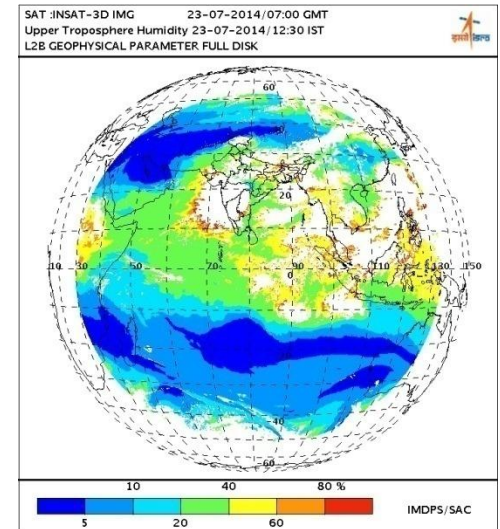
## RGB: VIS,VIS,TIR1



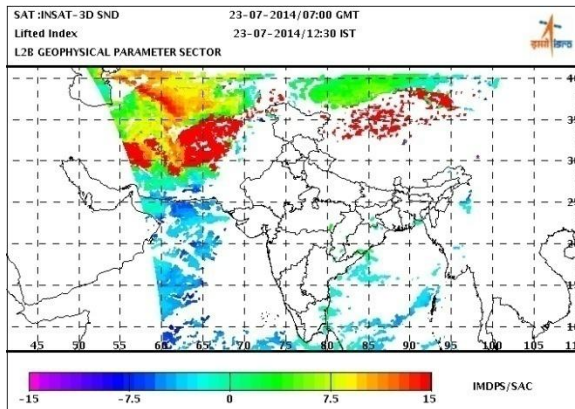
## SST



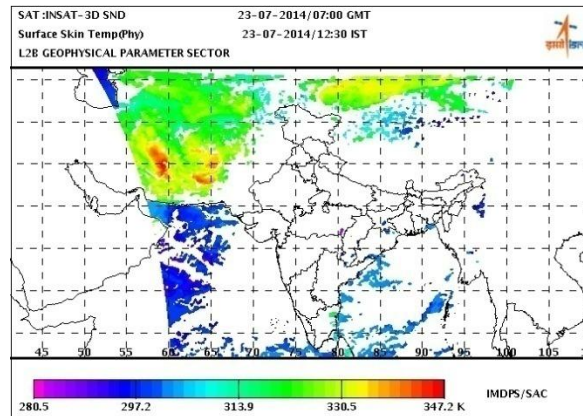
## UTH



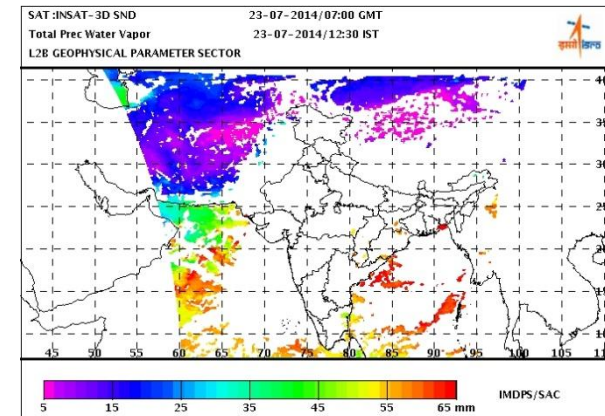
## Lifted Index



## Surface Skin Temp



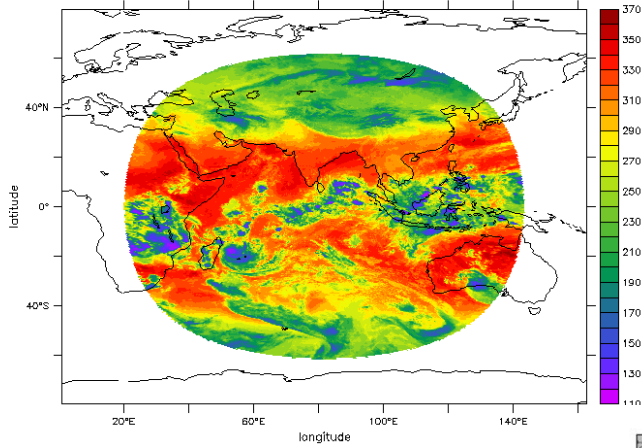
## Total Prec.Water



# FERRET

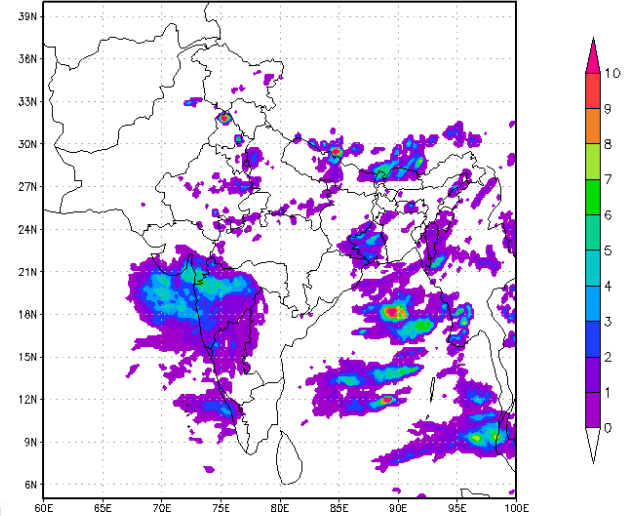
FERRET Ver. 4.8  
NASA/FAO, TRIP  
28-JUL-2014 12:11:07

TIME : 01-JAN-2014 15:30 DATA SET: 3DIMG\_01JAN2014\_1530\_L2B\_OLR.h5  
3DIMG\_01JAN2014\_1530\_L2B



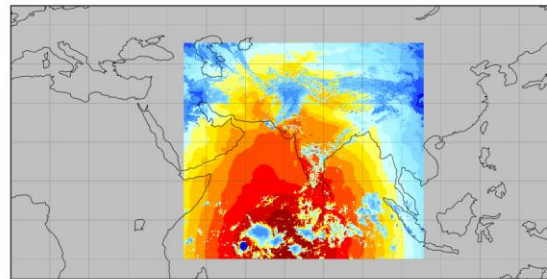
# GrADS

INSAT3D IMSRA RAIN RATE(mm/hr) 23JUL2014\_0900



# Panoply

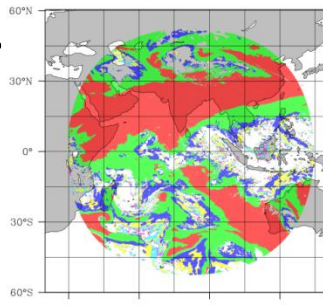
Solar Insolation



Solar Insolation (W.m-2)  
Data Min = 0.0, Max = 1157.2

# UTH

UTH



10 20 30 40 50 60 70 80 90

# NCL

# MATLAB

INSAT-3D IMAGER  
IMG\_JRI  
07-Jan-2014 06:00:00

